

# LOCAL EVENT 2013

The Region of Attica in cooperation with the Athens University Medical School, Master Course “Environment and Health: Capacity Building for Decision Making” (UoA) Athens – Attica, Greece will organize:

A Two-Day Event: Conference  
& Training Workshops on:

“Climate Change: Environmental and  
Health Impacts – Knowledge  
Integration and Implementation of  
Adaptation Policy in Local Government”

**Conference**

**Thursday 21 November 2013**

**9:00 - 19:00**

**Biomedical Research Foundation of the  
Academy of Athens (BRFAA)  
4 Soranou Ephessiou St., Katehaki  
Auditorium (Ground Floor)**

# Training Workshops

Friday 22 November 2013

9:00 - 19:00

Biomedical Research Foundation of the  
Academy of Athens (BRFAA)

4 Soranou Ephessiou St., Katehaki

Auditorium & Seminar room(Ground Floor)



**“Think Globally, Act Locally.”**

- Rene Dubos, 1972  
Rockefeller Institute Microbiologist, Ecologist, Author,  
Advisor to the UN Conference on the Environment

The thematic priorities will be presented focusing on two main areas

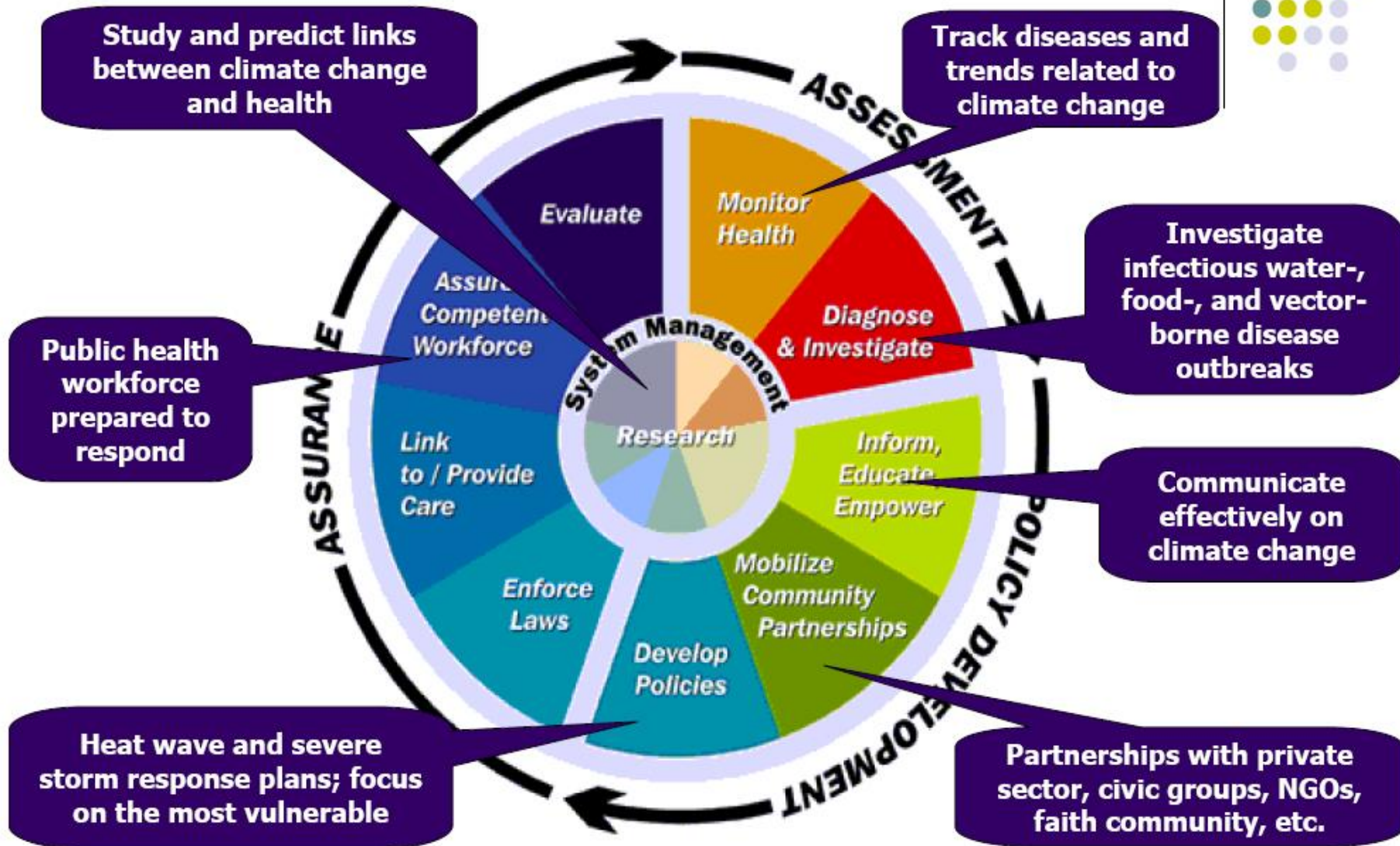
a) Climate Change

b) Environment & c) Health:

# **1<sup>st</sup> Thematic section**

**Air pollution and Climate change  
– Impacts on the Environment &  
Health**

# Public Health Actions: For Climate Change





**“What happens on the planet? What are the recent measurements of greenhouse gas emissions at local and global levels?”**



**Reducing one's carbon footprint  
in public spaces, through  
development/use of  
renewable/alternative energy  
sources and promoting the use of  
green technologies**

## **2<sup>nd</sup> Thematic section**

# **Extreme Weather Events – Impacts on the Environment & Health**

# Hurricane Katrina, New Orleans 2005



**GETTY IMAGES**



**Οι επιπτώσεις των κλιματικών αλλαγών στην υγεία, είναι αναγκαίο να πάρουν προτεραιότητα**

# Νότια Γαλλία 2011



SOUTH FRANCE 2011

***What can we expect to happen next? What are the potential future effects of global climate change?***



*“Gods know what will come, Men  
know what is, Wise men know  
what is coming ”*

*Ancient Greek Analect*

Blu-ray Disc



NATIONAL GEOGRAPHIC

# SIX° DEGREES

COULD CHANGE THE WORLD

NATIONAL GEOGRAPHIC CHANNEL  
PRESERVE OUR PLANET



**What actions should we adopt to  
reduce greenhouse gas  
emissions?**



**3<sup>rd</sup> Thematic Section**  
**Wetland Protection Policy**  
**Effects of Climate Change on**  
**Wetlands and Health**  
**Presentation of the**  
**OrientGate project**

# VOURKARI WETLAND, REGION OF ATTICA



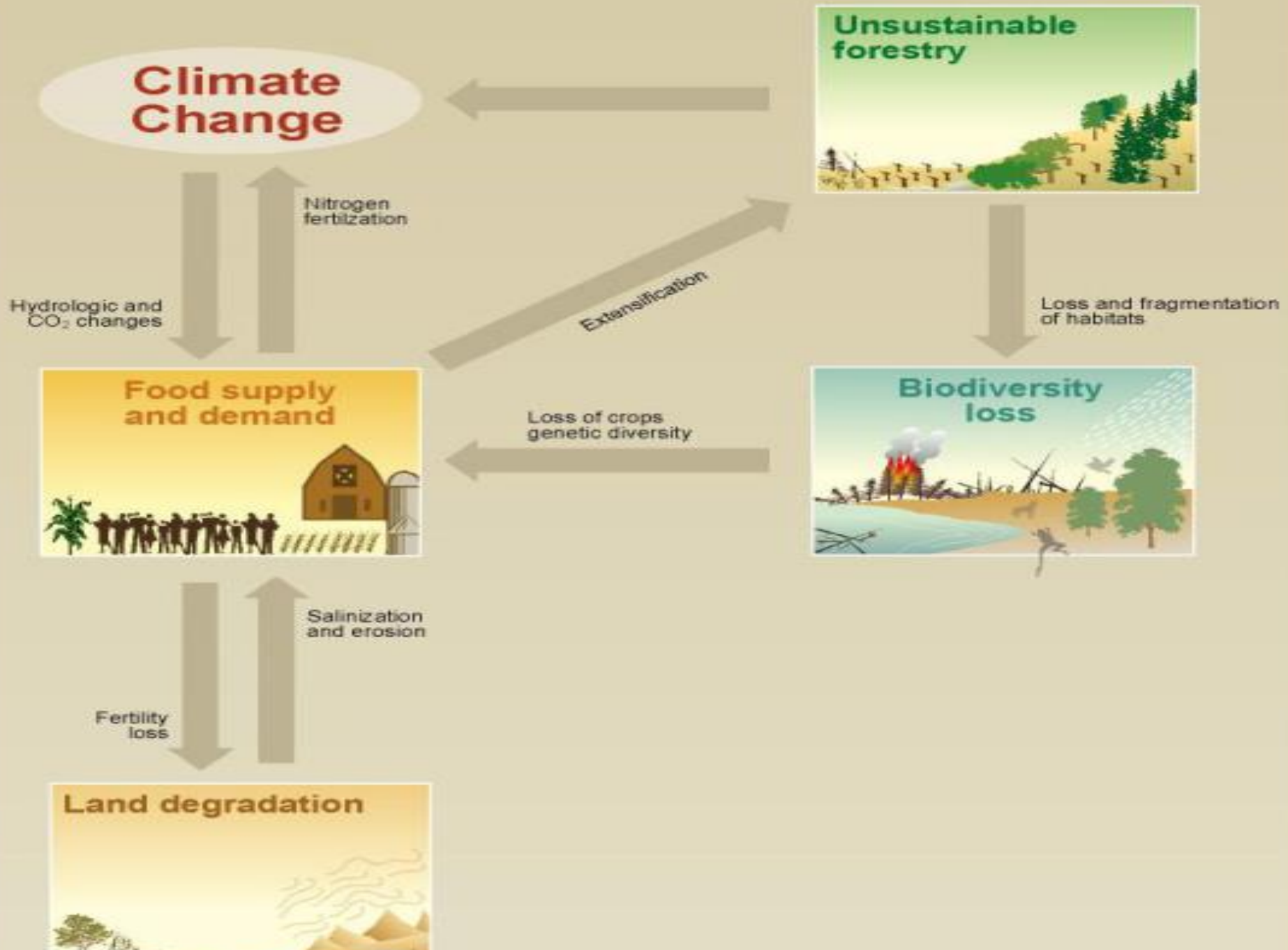


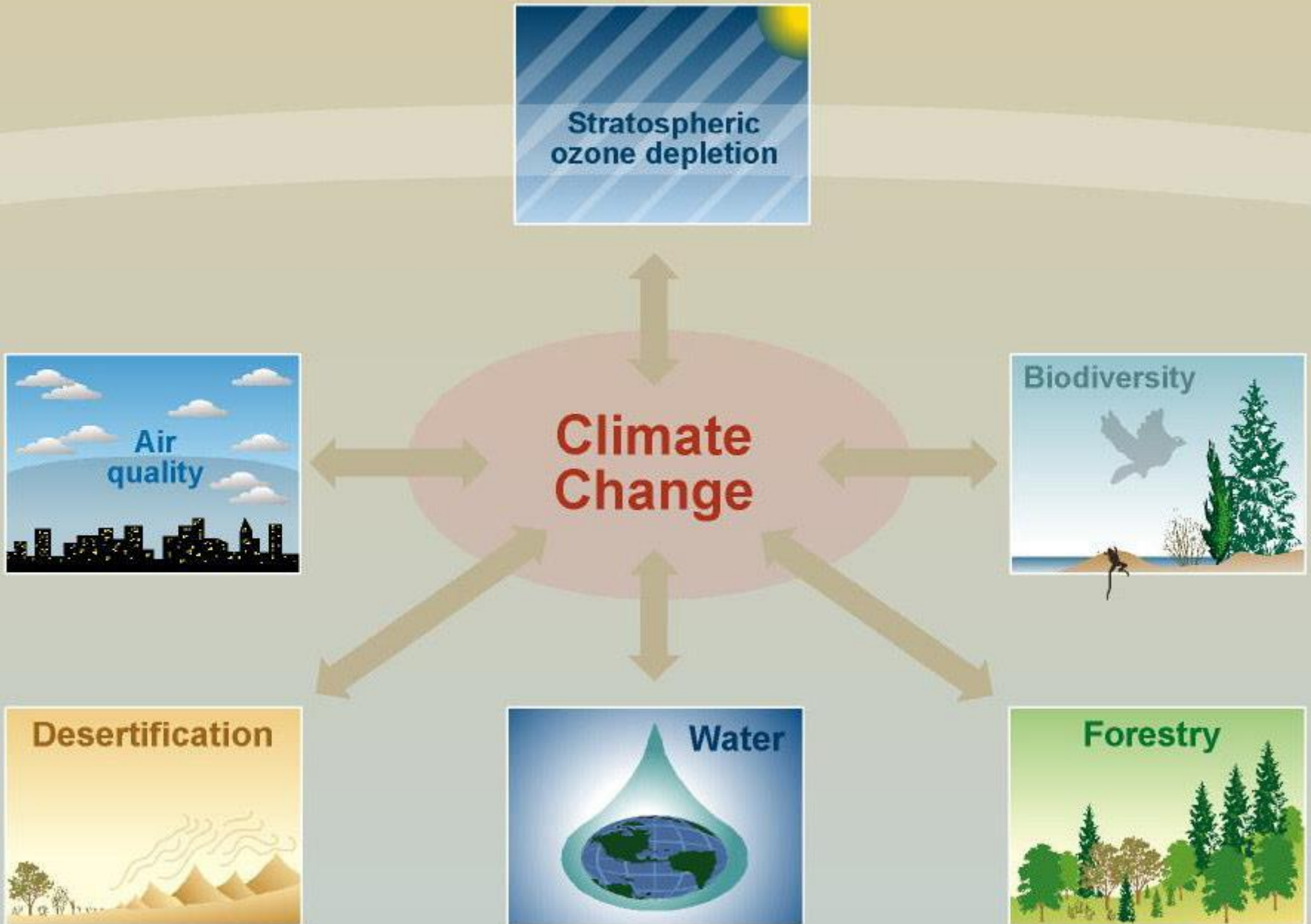
**VOULIAGMENI WETLAND, REGION OF ATTICA**



**What are the effects of climate change observed in hydrological and biological systems?**

# Climate change and food





# **Impact of global Climate change on the degradation of Wetlands and Biodiversity**

[RISING TEMPERATURES]

# Hotter Climate Will Reduce Yield

Agriculture as it exists today has been shaped by a climate system that has changed little in the 11,000-year history of farming. Because most crops were developed for maximum production under these stable conditions, the higher temperatures that are expected from global warming will reduce crop yield, measured in bushels per acre harvested. Crop ecologists reckon that for every rise of one degree Celsius (1.8 degrees Fahrenheit) above the norm, wheat, rice and corn yields fall by 10 percent.





**Changes in hydrological and biological systems and linking the degradation of wetlands to the incidence of diseases carried by insects**



SPL



4<sup>th</sup> Thematic section  
**Education (VET)**

**Climate Change – Environment & Health:  
The need for *Vocational Education and  
Training (VET)* with the participation of the  
European Centre for the Development of  
Vocational Training (CEDEFOP)  
“The example of Climate change”**

# Determinants of Health

Income and Social Status

Social Support Networks

Education

Employment and Working Conditions

Physical Environments

Biology and Genetics

Personal Health Practices and Coping Skills

Healthy Child Development

Health Services and Social Services

Social Environments

Gender

Culture

# The aim of the training workshops is to

- **Develop critical thinking skills** of all involved in order to take decisions on reducing the potential adverse effects of climate change on the Environment and Health.
- **Better understand how climate change affects the Environment & Health** and become aware of the most significant impacts of climate change.
- **Become aware of the basic principles and ideas** of the global warming and climate change.
- **Integrate *climate change adaptation and mitigation considerations*** into strategic *planning, at local and national levels*, in order to manage the risks of climate change and

- **Provide information about the risks vulnerable social groups are facing**, who are expected to be most affected by the impacts of climate change
- **Provide information about possible ways to reduce one's carbon footprint** in public places, workplaces and homes
- ***Raise awareness of the use of public transport*** and active movement, such as cycling or walking, as alternatives to using private vehicles

# WHAT IS TO BE DONE?

Plan B, the author's road map to correcting the factors that threaten our civilization, has four main components: a massive effort to cut carbon emissions by 80 percent from their 2006 levels by 2020; the stabilization of the world's population at eight billion or fewer by 2040; the eradication of poverty; and the restoration of the planet's forests, soils and aquifers. This box highlights a few of the major actions needed to accomplish these goals.



▲ Replace fossil fuels with renewables for electricity and heat.

◀ Plant trees to reduce flooding, conserve soil, sequester carbon and halt net deforestation.



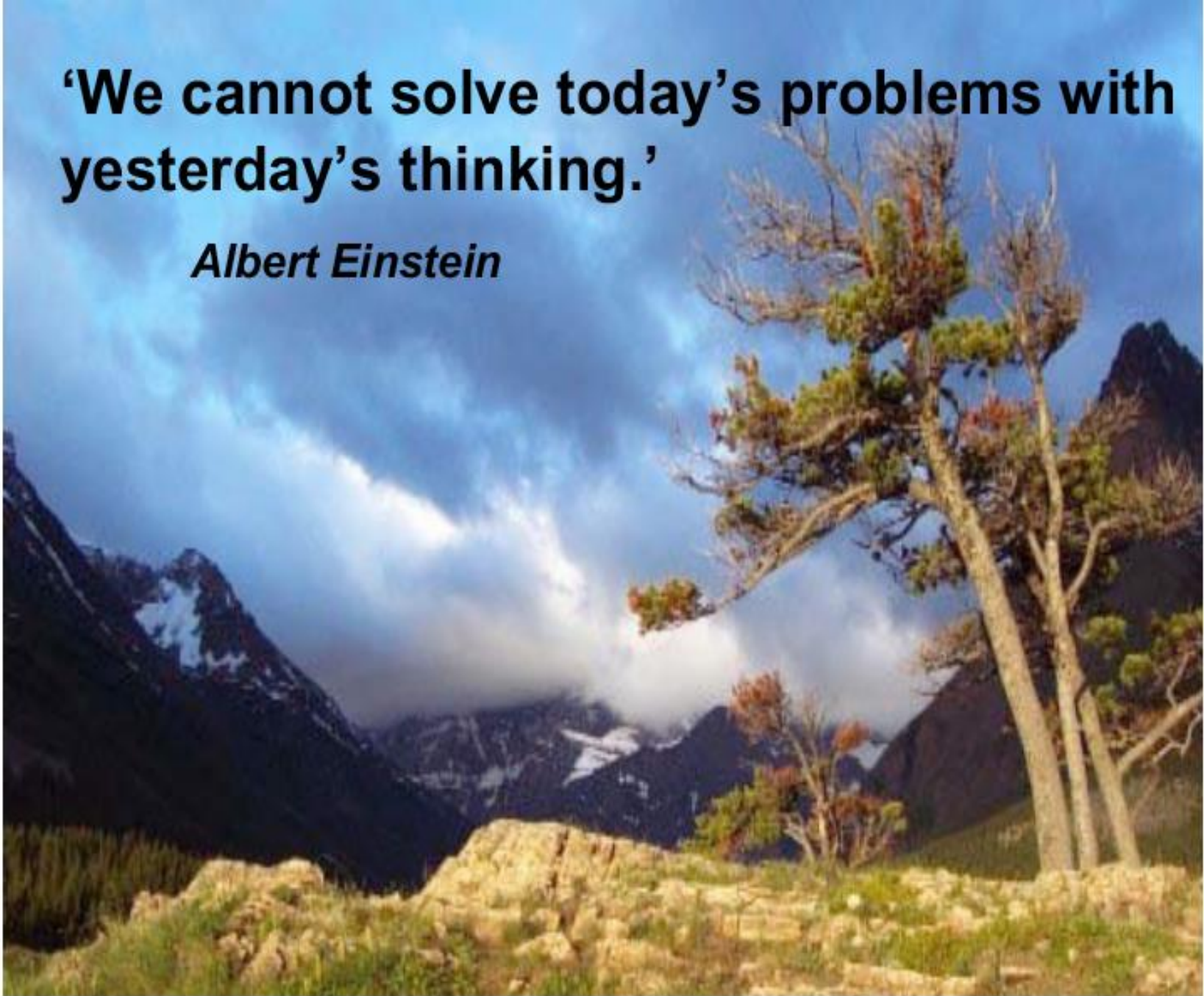
▲ Offer universal basic health care, reproductive health care and family planning.



▲ Recycle wastewater to raise its productivity, as this sewage treatment plant does for Orange County, California.

**‘We cannot solve today’s problems with yesterday’s thinking.’**

*Albert Einstein*





OPENDAYS 2013 LOCAL EVENT-REGION OF ATTICA-  
UNIVERSITY OF ATHENS